



URNEX® TRAINING

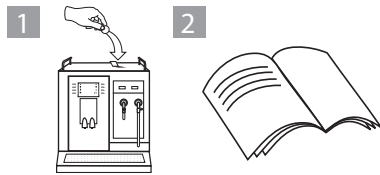


CAFIZA® ESPRESSO MACHINE CLEANING TABLETS

INSTRUCTIONS FOR DAILY USE:

FULLY AUTOMATIC ESPRESSO MACHINE

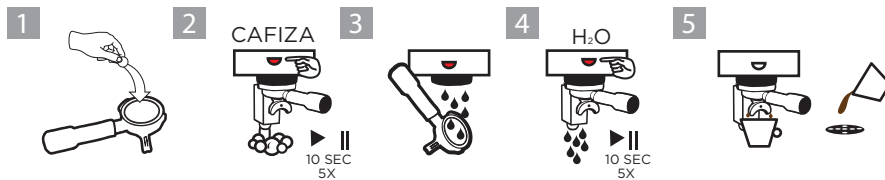
1. INSERT ONE (1) CAFIZA® ESPRESSO MACHINE CLEANING TABLET IN MACHINE OPENING.
2. FOLLOW MANUFACTURER'S "MAINTENANCE AND CLEANING" INSTRUCTIONS FOR DETAILS OF THE MACHINE'S CLEANING CYCLE.



INSTRUCTIONS FOR DAILY USE:

BACKFLUSH (EACH GROUP HEAD)

1. INSERT BLIND FILTER IN PORTA-FILTER AND ADD ONE (1) CAFIZA® TABLET. INSERT PORTA-FILTER INTO GROUP HEAD.
2. ACTIVATE BREW CYCLE FOR 10 SECONDS. STOP 10 SECONDS. REPEAT 5 TIMES.
3. REMOVE PORTA-FILTER. ACTIVATE BREW CYCLE AND RINSE PORTA-FILTER IN STREAM OF WATER FROM GROUP HEAD. STOP CYCLE.
4. INSERT PORTA-FILTER INTO GROUP HEAD. REPEAT STEP (2) WITHOUT CAFIZA® TABLET 5 TIMES.
5. MAKE AND DISCARD A CUP OF ESPRESSO TO ENSURE NO RESIDUE REMAINS.



URNEX BRANDS, INC

SPECIALIZED EQUIPMENT CLEANERS SINCE 1936

700 EXECUTIVE BLVD ELMSFORD, NY 10523 • TEL 914.963.2042 • FAX 914.963.2145

www.urnex.com